



Sisukas

Supporting Children in Foster Care
to Succeed at School



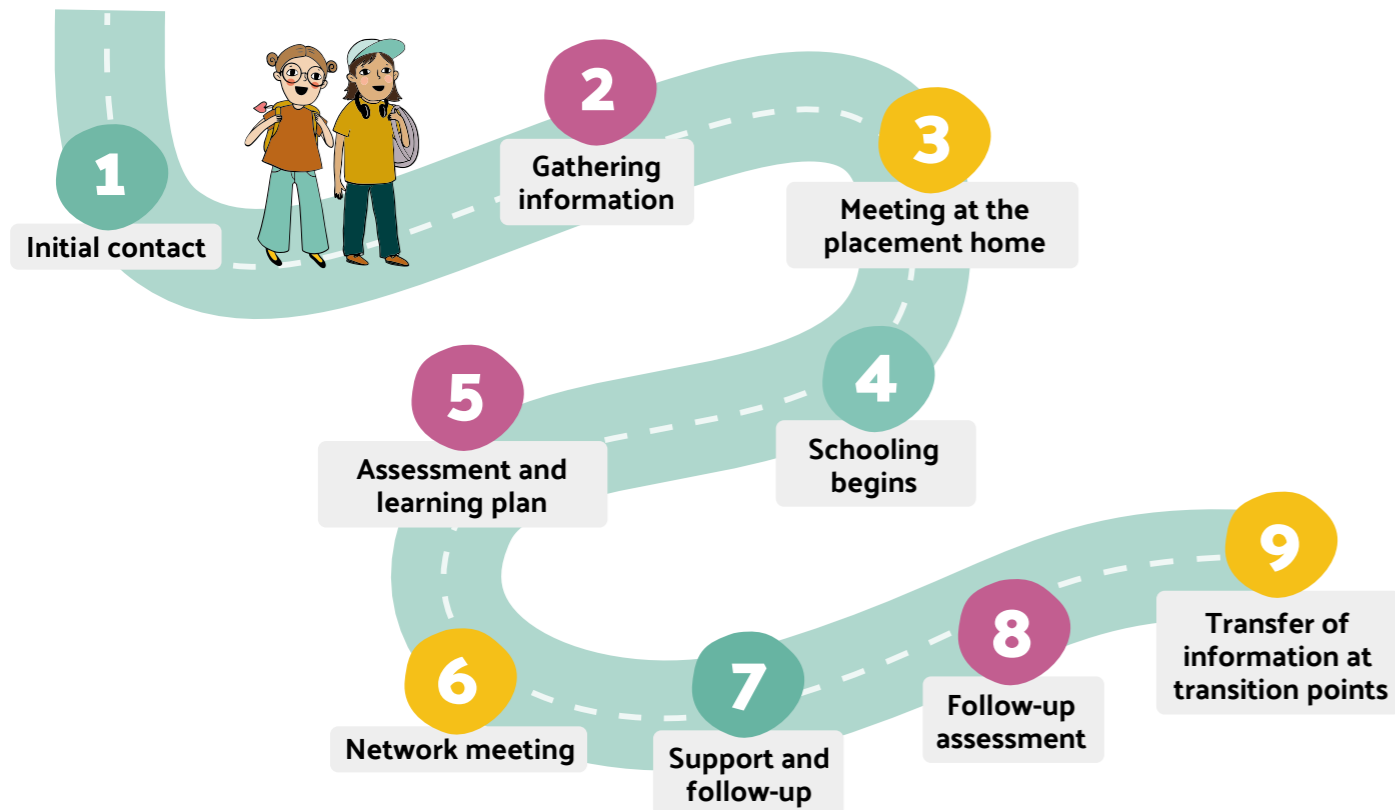


Sisukas Model

The **Nordic, research-based Sisukas** model supports the learning and wellbeing of primary school-aged children living in child welfare substitute care, in collaboration with the school, guardians, placement home and child welfare services. The model provides clear steps for organizing basic education when schooling begins or when a child changes schools due to a placement.

The work is coordinated by a regional Sisukas team (a pair of special education teachers), which brings together the multidisciplinary network and gathers all necessary information to arrange education. The child's participation plays a central role to ensure that the support for schooling corresponds to the pupil's individual needs.

Steps when a child living in substitute care starts school



Why Sisukas?



- Smooth and continuous schooling is one of the most important protective factors in the lives of children living in substitute care, according to research.
- Young people report that participation in planning their schooling increases motivation and strengthens engagement in education.
- Timely support prevents difficulties from accumulating.
- Clear structures support everyday life and wellbeing.
- Sisukas reduces overlapping work and improves information flow between professionals.



Sisukas provides

- continuity in the school path of children in substitute care
- support for a successful placement
- pedagogical rehabilitation
- capacity-building and strengthened competence in local schools
- clarity in roles and responsibilities
- a strengths-based and trauma-informed approach
- teamwork and consultation support in challenging situations



Regional Sisukas teams

Sisukas teams in the regions:

- investigate the child's schooling and support history
- coordinate the arrangements for education
- build the network around the child
- offer support and consultation to local schools and placement homes



Sisukas helps ensure that every child can learn, grow, and connect with school based on their own starting points.

More information and contact:

pesapuu.fi/sisukas

You can also contact the Sisukas team in your own municipality.



Pesäpuu ry provides support

When starting the work

- Guidance and support
- Training and materials

During the work

- Close cooperation
- Mentoring
- The Sisukas network and peer support

Nationally

- Coordination
- Monitoring of effectiveness
- Further development
- International collaboration

