



Pikku Sisukas

Child in Foster Care
in Early Childhood Education



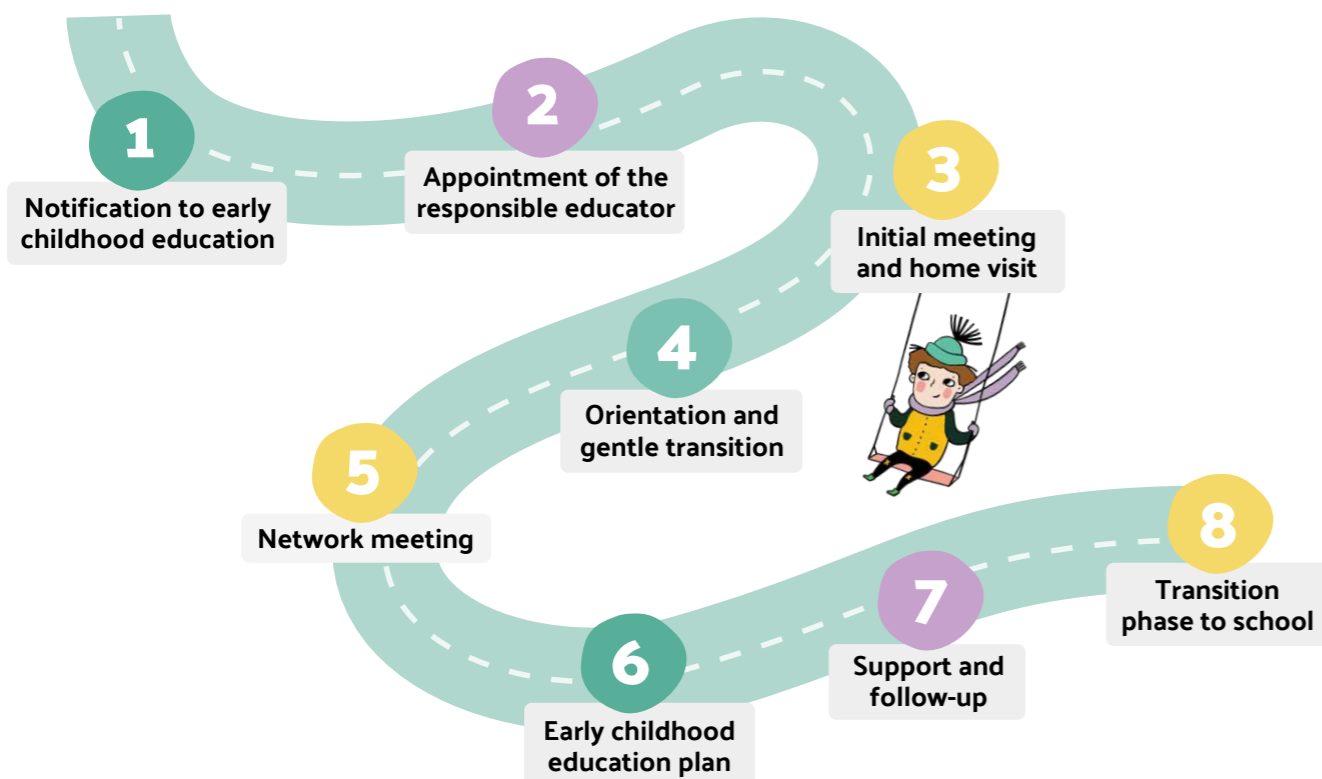
Pikku Sisukas Model

Do you work with children who have experienced adverse life events?

Pikku Sisukas is an operational model for organizing early childhood education for children living in child welfare substitute care. The model provides clear steps for successful multi-agency cooperation between child welfare services, early childhood education, foster carers, and guardians.

Pikku Sisukas helps to identify children's possible trauma experiences and individual needs, offering safety and opportunities for healing experiences.

Steps when a child living in substitute care begins early childhood education:



Why Pikku Sisukas?

Placement, taking a child into care, and the events leading up to them are traumatic experiences for a child. The child may show their distress through behaviour, making it crucial for early childhood education staff to have sufficient information about the root causes and the skills to support the child. In addition, competence in multi-professional network collaboration is required. Everyday cooperation with foster carers is also essential.

Pikku Sisukas promotes

- smooth information flow
- open, multi-professional dialogue
- clear division of responsibilities
- a child-centred working approach

Pikku Sisukas provides information on

- child welfare and confidentiality obligations
- educational partnership and network cooperation
- trauma-informed practice
- attachment-focused caregiving
- methods for stabilizing the child's daily life



Pesäpuu ry

offers training, a guide, and support materials
for launching the model as well as for
trauma-informed early childhood education.



Every child's uniqueness
deserves to be seen!

More information and contact:

pesapuu.fi/pikkusiskas

**You can also contact your
municipality's Pikku Sisukas services**

